

Here's **Dave's** fifth page. Click on the links below to go the others. Thanks, **Dave**, and keep 'em coming.

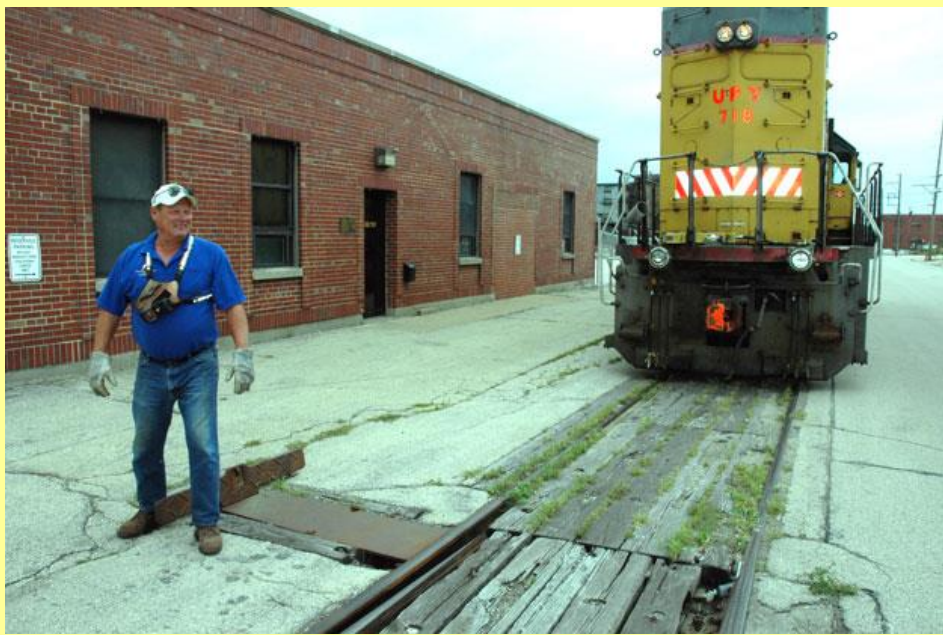
[Page 1](#) | [Page 2](#) | [Page 3](#) | [Page 4](#) | [Page 6](#) | [Page 7](#) | [Page 8](#) | [Page 9](#) | [Page 10](#) | [Page 11](#)



Illinois Division Conductor **Gregg Scott** and Wisconsin Division Conductor **Ruthann Hawley** at Ashton, IL on 01/15/03. Gregg now works the Illinois Division as an Engineer.



Illinois Division Conductor **Milton Schroeder** taken on 06/14/05 at Global 3.



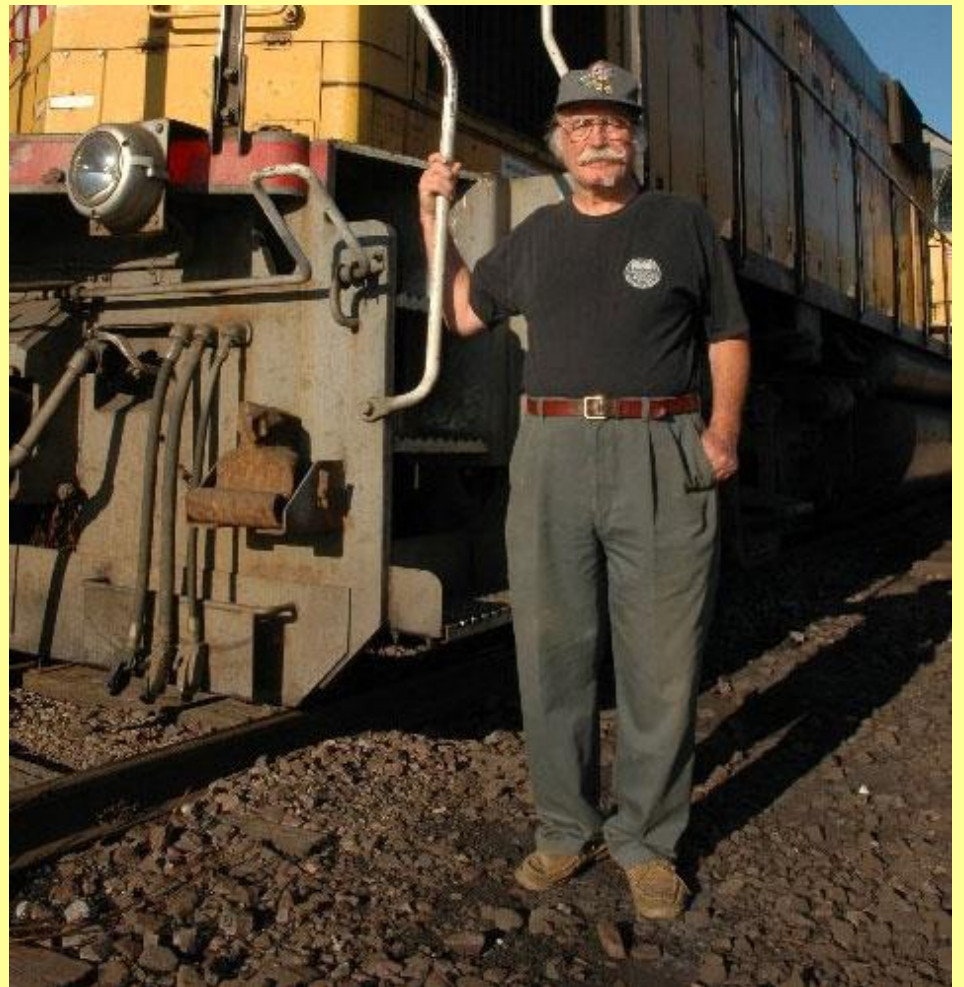
On the left; Illinois Division Brakeman **Warren Engle** & on the right; the UPY 718, both at Sterling, Illinois on 08/25/05.



That's **Warren** on the ground while the UPY 718 pulls the very last car out of the National Manufacturing Co. plant in Sterling, Illinois, 8/25/05.



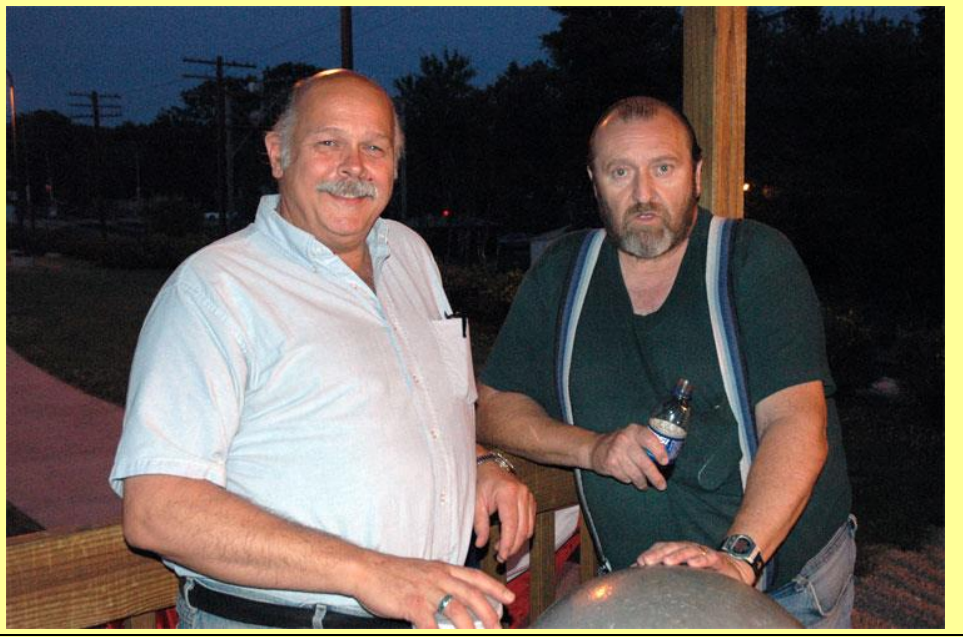
Illinois Division Engineer Don Gray at Rochelle, IL. on 09/09/05.



Retired Illinois Division Conductor **Louie Beggs, Jr.** at Sterling, IL. on 08/31/05. Louie retired in 1995.



Illinois Division Engineer **Bruce Prather** and Conductor **Bob Fisher** ready to depart Proviso on MPRCB-12 on 06/12/05.



Illinois Division Engineer **Bob Richards** (right) with friend **Keith Peters** at the Rochelle Railroad Park on 06/11/05.



Illinois men: **Mike Schaffer** (left) and **Tim Bucey** both work as Remote Control Operators at Global 3 on 06/12/05.



Chicago Terminal Engineers (left to right) **Lemare Horn, Jr.**, **Johnny Garr** and **Eugene Baker** at Global 1 on 06-14-05.



Sterling Carman **Mike Keefer** (left) and Illinois Division Conductor **Gerry Conkling** at Sterling, IL on 08/26/05.



Working at Sterling, Illinois on 08/30/05; (left to right) **Isaias Ferrel**, **David Coy** and **Javier Vazquez** from the Sterling Section and **Pat Dempsey**, the Sterling Signal Maintainer.

